

**NOZZLE STRAINERS**  
POLYPRO BODY  
ST. STEEL SCREENS



**BOOM CLAMPS, STEEL**



**NO DRIP NOZZLE FITTINGS**



**AGITATOR & TEE**

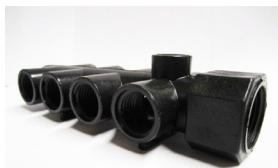


**12V VALVE**

NYLON BODY, SANTO DIAPHRAGM, VITON "O" RINGS, 150 PSI MAX



**COMBINATION TANK ADAPT**



**MANIFOLD**

<i>Mesh</i>	<i>Part #</i>	<i>List/E</i>
50 (Blue)	MC55550	1.32
100 (Green)	MC555100	1.32
200	MC555200	2.98
50/Check	MC55550C	3.05
100/Check	MC555100C	3.05
200/Check	MC555200C	4.92

<i>Size</i>	<i>Part #</i>	<i>List/E</i>
1" SQ	B111C	2.98
1 1/4" SQ	B11114C	3.07
3/4" RD	B1134RC	2.72
1" RD	B111RC	2.98

<i>Hb/Type</i>	<i>Part #</i>	<i>List/E</i>
1/2" Elbow	DFNTL12	15.98
3/4" Elbow	DFNTL34	15.98
1/2" Tee	DFNTT12	15.98
3/4" Tee	DFNTT34	15.98

<i>Description</i>	<i>Part #</i>	<i>List/E</i>
Agitator	T10VHPP	5.55
Agitator Tee	T34TEPP	7.25
Short Tee	T34TESPP	3.64
Extension	T34TEXPP	3.36

<i>Description</i>	<i>Part #</i>	<i>List/E</i>
1 FP Valve	EVC700	132.30
Diaphragm	EVC700-D	10.77
Solenoid	EVC700-S	71.55

<i>Nylon</i>	<i>List/E</i>	<i>Polypropylene</i>	<i>List/E</i>
T20CM	14.43	T20CMPP	14.30

<i>Fpt</i>	<i>Fpt</i>	<i>Part #</i>	<i>List/E</i>
3/4" In	1/2" Out	M1284	53.44



**NOZZLE ELBOW**



**NOZZLE TEE**



**NOZZLE CROSS**



**NOZZLE STRAIGHT**

<i>Hb</i>	<i>Nylon</i>	<i>List/E</i>	<i>Polypropylene</i>	<i>List/E</i>
1/4	T014EL	1.48	T014ELPP	1.27
3/8	T01EL	1.11	T01ELPP	1.19
1/2	T03EL	1.14	T03ELPP	1.23
5/8	T05EL	1.38	T05ELPP	1.27
3/4	T04EL	1.35	T04ELPP	1.69
<i>Hb</i>	<i>Nylon</i>	<i>List/E</i>	<i>Polypropylene</i>	<i>List/E</i>
3/8	T01TE	1.33	T01TEPP	1.26
1/2	T03TE	1.39	T03TEPP	1.33
5/8	T05TE	2.38	T05TEPP	3.45
3/4	T04TE	1.89	T04TEPP	1.77
<i>Hb</i>	<i>Nylon</i>	<i>List/E</i>	<i>Polypropylene</i>	<i>List/E</i>
3/8	T01CR	1.54	T01CRPP	1.90
1/2	T03CR	1.82	T03CRPP	1.96
3/4	T04CR	3.03	T04CRPP	2.72
<i>Hb</i>	<i>Nylon</i>	<i>List/E</i>	<i>Polypropylene</i>	<i>List/E</i>
3/8	T01ST	.86	T01STPP	.86
1/2	T03ST	.86	T03STPP	.88
3/4	T04ST	1.65	T04STPP	1.63

NOTE: ALL NOZZLE FITTINGS INCLUDE LOCKNUT (T03NT)



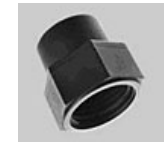
T03CA



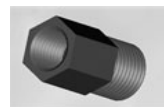
T36\_



T03NT



T0\_AD

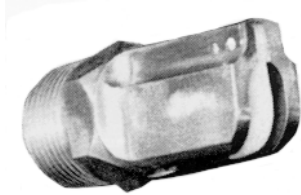


NN\_F



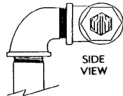
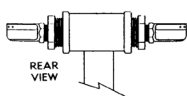
NN\_

<i>Part</i>	<i>Nylon</i>	<i>List/E</i>	<i>Polypropylene</i>	<i>List/E</i>	
Nozzle Sw Nut	T03CA	.36	T03CAPP	.39	
Winged Sw Nut	T03WG	.84	T03WGPP	.86	
<i>Hb</i>	<i>Nylon</i>	<i>List/E</i>	<i>Polypropylene</i>	<i>List/E</i>	
1/4	T3614	.46	T3614PP	.41	
3/8	T3638	.45	T3638PP	.39	
1/2	T3612	.50	T3612PP	.45	
<i>Part</i>	<i>Nylon</i>	<i>List/E</i>	<i>Polypropylene</i>	<i>List/E</i>	
Locknut	T03NT	.25	T03NTPP	.24	
Nozzle Cap	T03BL	.38	T03BLPP	.42	
Blank Disc			T03PLPP	.57	
Washer	T03WA	.32	T03WAPP	.32	
<i>Thr</i>	<i>Fpt</i>	<i>Nylon</i>	<i>List/E</i>	<i>Polypropylene</i>	<i>List/E</i>
Fnbt	1/8	T02AD	1.06	T02ADPP	1.06
Fnbt	1/4	T03AD	1.06	T03ADPP	1.05
<i>Thr</i>	<i>Fpt</i>	<i>Nylon</i>	<i>List/E</i>	<i>Polypropylene</i>	<i>List/E</i>
Mnbt	1/8	NN2F	1.66	NN2FPP	1.59
Mnbt	1/4	NN4F	1.66	NN4FPP	1.59
<i>Thr</i>	<i>Mpt</i>	<i>Nylon</i>	<i>List/E</i>	<i>Polypropylene</i>	<i>List/E</i>
Mnbt	1/4	NN4	.54	NN4PP	.49
Mnbt	1/2	NN8	.61	NN8PP	.51



**BOOMBUSTER  
BOOMLESS NOZZLES**

- Machined from Stainless Steel
- Industrial Grade Nylon Diffusers
- Extra Wide Spray Pattern
- Spray chemicals and fertilizers.
- Standard pipe threads



**Part# List/E**

BB1203	249.00
BB1205	249.00
BB125	249.00
BB140	267.00
BB1806	280.00
BB18010	280.00
BB187	280.00
BB26011	309.00
BB265	309.00
BB375	329.00
BB437	344.00
BB500	415.00
BB504	415.00

ADD "R" TO END OF PART NUMBER FOR ROADSIDE NOZZLE.

PART #	ANGLE	PSI	GPM	DIST.	4 MPH	5	7	10	12
BB1203	Down	30	1.7	3	70	56	40	28	23
1/4 MPT	Down	40	2.0	3	83	66	47	33	27
	Down	50	2.2	3	91	73	52	36	30
BB1205	Down	30	1.7	5	42	34	24	17	14
1/4 MPT	Down	40	2.0	5	50	40	28	20	17
	Down	50	2.0	5	54	44	31	22	18
BB125	Level	20	1.5	14	13.3	10.6	7.6		
1/4 MPT	Level	30	1.7	15.5	13	11	7.8		
		40	2.0	15.5	16	13	9.1		
BB140	Level	30	2.0	16.5	15	12	8.5	6	5
3/8 MPT	Level	40	2.4	16.5	18	14	10	7	6
	Level	50	2.7	16.5	20	16	12	8	6.8
BB1806	Down	30	3.6	6	74	59	42	30	25
3/8 MPT	Down	40	4.3	6	89	71	51	35	30
	Down	50	4.8	6	100	79	57	40	33
BB18010	Down	30	3.6	10	45	36	25	18	15
3/8 MPT	Down	40	4.3	10	53	43	30	21	18
	Down	50	4.8	10	59	48	34	24	20
BB187	Level	30	3.6	18.5	24	19	14	9.6	8
3/8 MPT	Level	40	4.3	18.5	29	23	16	12	9.6
	Level	50	4.8	18.5	32	26	18	13	11
BB265	Level	30	6.8	19.5	43	35	25	17	14
1/2 MPT	Level	40	8.0	19.5	51	41	29	20	17
	Level	50	8.8	19.5	56	45	32	22	19
BB375	Level	30	14.4	21.5	83	66	47	33	28
3/4 MPT	Level	40	16.7	21.5	96	77	55	38	32
	Level	50	18.8	21.5	108	87	62	43	36
BB437	Up	30	18.5	29.5	78	62	44	31	26
3/4 MPT	Up	40	21.5	29.5	90	72	52	36	30
	Up	50	24.2	29.5	102	81	58	41	34
BB500	Level	30	29	20	179	142	102	72	60
1 MPT	Level	40	33	20	204	164	116	82	68
	Level	50	37	20	229	182	130	91	76
BB504	Up	30	29	41	90	72	51	36	30
1 MPT	Up	40	33	41	102	82	58	41	34
	Up	50	37	41	114	91	65	46	38

**BOOMINATOR  
BOOMLESS NOZZLES**



- Machined from Stainless Steel
- Superior fluid pattern and dist.
- Heavy droplet pattern for minimal drift
- Short, Regular, or Full Pattern
- All nozzles factory tested

Part#	Mpt	Pattern	List/E
BI1250 L or R	1/4	Regular	233.00
BI1400 L or R	1/4	Regular	255.00
BI1870 L or R	1/4	Regular	275.00
BI1253 L or R	1/4	Short	233.00
BI1255 L or R	1/4	Short	233.00
BI1404 L or R	1/4	Short	255.00
BI1406 L or R	1/4	Short	255.00
BI1876 L or R	1/4	Short	275.00
BI1871 L or R	1/4	Short	275.00
BI1250FS	1/4	Full	278.00
BI1400FS	1/4	Full	307.00
BI1400FM	1/4	Full	307.00
BI1870FS	1/4	Full	329.00
BI1870FM	1/4	Full	329.00
BI1870FL	1/4	Full	329.00
BI2650 L or R	1/2	Regular	329.00
BI3750 L or R	1/2	Regular	336.00

PART #	PSI	GPM	DIST.	4 MPH	5	7	10	12
BI1250	20	1.5	16	12	9	7		
LEFT &	30	1.7	16	13	11	8		
RIGHT	40	2.0	16	16	12	9		
BI1400	20	1.7	17	12	10	7	5	4
LEFT &	30	2.0	17	15	12	8	6	4.5
RIGHT	40	2.5	17	18	15	10	7	6
BI1870	20	3.0	18	21	17	12	8	7
LEFT &	30	3.5	18	24	19	14	10	8
RIGHT	40	4.3	18	30	24	17	12	10
BI1253	20	1.5	3	62	50	35	25	21
LEFT &	30	1.7	3	70	56	40	28	23
RIGHT	40	2.0	3	83	66	47	33	28
BI1255	20	1.5	5	37	30	21	15	12
LEFT &	30	1.7	5	42	34	24	17	14
RIGHT	40	2.0	5	50	40	28	20	17
BI1404	20	1.7	4	53	42	30	21	18
LEFT &	30	2.0	4	62	50	35	25	21
RIGHT	40	2.5	4	77	62	44	31	26
BI1406	20	1.7	6	35	28	20	14	12
LEFT &	30	2.0	6	41	33	24	17	14
RIGHT	40	2.5	6	52	41	30	21	17
BI1876	20	3.0	6	62	50	35	25	21
LEFT &	30	3.5	6	72	58	41	29	24
RIGHT	40	4.3	6	89	71	51	35	30
BI1871	20	3.0	10	37	30	21	15	13
LEFT &	30	3.5	10	43	35	25	17	15
RIGHT	40	4.3	10	53	43	30	21	18
BI1250FS	20	1.5	16	12	8	6.5		
	30	1.7	16	13	11	8		
	40	2.0	16	16	12	9		
BI1400FS	20	1.7	17	12	10	7	5	4
	30	2.0	17	15	12	8	6	4.5
	40	2.5	17	18	15	10	7	6
BI1400FM	20	1.7	22	10	8	5.5	4	3
	30	2.0	22	11	9	6	4.5	3.5
	40	2.5	22	14	11	8	5.5	4.5
BI1870FS	20	3.0	18	21	17	12	8	7
	30	3.5	18	24	19	14	10	8
	40	4.3	18	30	24	17	12	10
BI1870FM	20	3.0	23	16	13	9	6.5	5
	30	3.5	23	19	15	11	7.5	6
	40	4.3	23	23	19	13	9	7.5
BI1870FL	20	3.0	30	12	10	7	5	4
	30	3.5	30	14	12	8	5.5	4.5
	40	4.3	30	18	14	10	7	6

BOOMLESS NOZZLES

Other Nozzles Available - Please Call