

**NOZZLE STRAINERS**  
POLYPRO BODY  
ST. STEEL SCREENS



**BOOM CLAMPS, STEEL**



**NO DRIP NOZZLE FITTINGS**



**AGITATOR & TEE**



**12V VALVE**

NYLON BODY, SANTO DIAPHRAGM, VITON "O" RINGS, 150 PSI MAX



**COMBINATION TANK ADAPT**



**MANIFOLD**

<i>Mesh</i>	<i>Part #</i>	<i>List/E</i>
50 (Red)	MC55550	1.32
100 (Green)	MC555100	1.32
200	MC555200	2.98
50/Check	MC55550C	3.05
100/Check	MC555100C	3.05
200/Check	MC555200C	4.92

<i>Size</i>	<i>Part #</i>	<i>List/E</i>
1" SQ	B111C	2.94
1 1/4" SQ	B11114C	3.03
3/4" RD	B1134RC	2.69
1" RD	B111RC	2.94

<i>Hb/Type</i>	<i>Part #</i>	<i>List/E</i>
1/2" Elbow	DFNTL12	15.55
3/4" Elbow	DFNTL34	15.55
1/2" Tee	DFNTT12	15.55
3/4" Tee	DFNTT34	15.55

<i>Description</i>	<i>Part #</i>	<i>List/E</i>
Agitator	T10VHPP	5.47
Agitator Tee	T34TEPP	6.58
Short Tee	T34TESPP	3.34
Extension	T34TEXPP	3.07

<i>Description</i>	<i>Part #</i>	<i>List/E</i>
1 FP Valve	EVC700	132.30
Diaphragm	EVC700-D	10.77
Solenoid	EVC700-S	71.55

<i>Nylon</i>	<i>List/E</i>	<i>Polypropylene</i>	<i>List/E</i>
T20CM	14.43	T20CMPP	13.81

<i>Fpt</i>	<i>Fpt</i>	<i>Part #</i>	<i>List/E</i>
3/4" In	1/2" Out	M1284	52.42



**NOZZLE ELBOW**



**NOZZLE TEE**



**NOZZLE CROSS**



**NOZZLE STRAIGHT**

<i>Hb</i>	<i>Nylon</i>	<i>List/E</i>	<i>Polypropylene</i>	<i>List/E</i>
1/4	T014EL	1.40	T014ELPP	1.27
3/8	T01EL	.98	T01ELPP	1.08
1/2	T03EL	1.09	T03ELPP	1.17
5/8	T05EL	1.36	T05ELPP	1.27
3/4	T04EL	1.31	T04ELPP	1.69
<i>Hb</i>	<i>Nylon</i>	<i>List/E</i>	<i>Polypropylene</i>	<i>List/E</i>
3/8	T01TE	1.23	T01TEPP	1.22
1/2	T03TE	1.32	T03TEPP	1.30
5/8	T05TE	2.38	T05TEPP	3.45
3/4	T04TE	1.69	T04TEPP	1.77
<i>Hb</i>	<i>Nylon</i>	<i>List/E</i>	<i>Polypropylene</i>	<i>List/E</i>
3/8	T01CR	1.53	T01CRPP	1.89
1/2	T03CR	1.73	T03CRPP	1.84
3/4	T04CR	2.67	T04CRPP	2.46
<i>Hb</i>	<i>Nylon</i>	<i>List/E</i>	<i>Polypropylene</i>	<i>List/E</i>
3/8	T01ST	.86	T01STPP	.86
1/2	T03ST	.86	T03STPP	.88
3/4	T04ST	1.57	T04STPP	1.63

NOTE: ALL NOZZLE FITTINGS INCLUDE LOCKNUT (T03NT)



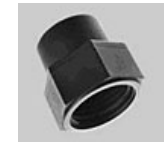
T03CA



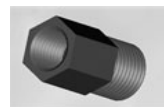
T36\_



T03NT



T0\_AD

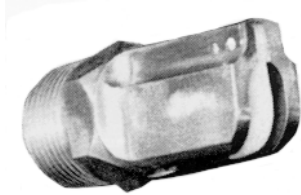


NN\_F



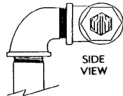
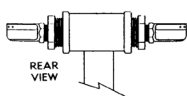
NN\_

<i>Part</i>	<i>Nylon</i>	<i>List/E</i>	<i>Polypropylene</i>	<i>List/E</i>	
Nozzle Sw Nut	T03CA	.36	T03CAPP	.39	
Winged Sw Nut	T03WG	.84	T03WGPP	.85	
<i>Hb</i>	<i>Nylon</i>	<i>List/E</i>	<i>Polypropylene</i>	<i>List/E</i>	
1/4	T3614	.44	T3614PP	.41	
3/8	T3638	.45	T3638PP	.39	
1/2	T3612	.48	T3612PP	.45	
<i>Part</i>	<i>Nylon</i>	<i>List/E</i>	<i>Polypropylene</i>	<i>List/E</i>	
Locknut	T03NT	.23	T03NTPP	.23	
Nozzle Cap	T03BL	.38	T03BLPP	.42	
Blank Disc			T03PLPP	.56	
Washer	T03WA	.31	T03WAPP	.31	
<i>Thr</i>	<i>Fpt</i>	<i>Nylon</i>	<i>List/E</i>	<i>Polypropylene</i>	<i>List/E</i>
Fnbt	1/8	T02AD	1.06	T02ADPP	1.06
Fnbt	1/4	T03AD	1.06	T03ADPP	1.05
<i>Thr</i>	<i>Fpt</i>	<i>Nylon</i>	<i>List/E</i>	<i>Polypropylene</i>	<i>List/E</i>
Mnbt	1/8	NN2F	1.66	NN2FPP	1.59
Mnbt	1/4	NN4F	1.66	NN4FPP	1.59
<i>Thr</i>	<i>Mpt</i>	<i>Nylon</i>	<i>List/E</i>	<i>Polypropylene</i>	<i>List/E</i>
Mnbt	1/4	NN4	.53	NN4PP	.49
Mnbt	1/2	NN8	.59	NN8PP	.51



**BOOMBUSTER  
BOOMLESS NOZZLES**

- Machined from Stainless Steel
- Industrial Grade Nylon Diffusers
- Extra Wide Spray Pattern
- Spray chemicals and fertilizers.
- Standard pipe threads



ADD "R" TO END OF PART NUMBER FOR ROADSIDE NOZZLE.

Part#	List/E
BB1203	249.00
BB1205	249.00
BB125	249.00
BB140	267.00
BB1806	280.00
BB18010	280.00
BB187	280.00
BB26011	309.00
BB265	309.00
BB375	329.00
BB437	344.00
BB500	415.00
BB504	415.00

PART #	ANGLE	PSI	GPM	DIST.	4 MPH	5	7	10	12
BB1203	Down	30	1.7	3	70	56	40	28	23
1/4 MPT	Down	40	2.0	3	83	66	47	33	27
	Down	50	2.2	3	91	73	52	36	30
BB1205	Down	30	1.7	5	42	34	24	17	14
1/4 MPT	Down	40	2.0	5	50	40	28	20	17
	Down	50	2.0	5	54	44	31	22	18
BB125	Level	20	1.5	14	13.3	10.6	7.6		
1/4 MPT	Level	30	1.7	15.5	13	11	7.8		
		40	2.0	15.5	16	13	9.1		
BB140	Level	30	2.0	16.5	15	12	8.5	6	5
3/8 MPT	Level	40	2.4	16.5	18	14	10	7	6
	Level	50	2.7	16.5	20	16	12	8	6.8
BB1806	Down	30	3.6	6	74	59	42	30	25
3/8 MPT	Down	40	4.3	6	89	71	51	35	30
	Down	50	4.8	6	100	79	57	40	33
BB18010	Down	30	3.6	10	45	36	25	18	15
3/8 MPT	Down	40	4.3	10	53	43	30	21	18
	Down	50	4.8	10	59	48	34	24	20
BB187	Level	30	3.6	18.5	24	19	14	9.6	8
3/8 MPT	Level	40	4.3	18.5	29	23	16	12	9.6
	Level	50	4.8	18.5	32	26	18	13	11
BB265	Level	30	6.8	19.5	43	35	25	17	14
1/2 MPT	Level	40	8.0	19.5	51	41	29	20	17
	Level	50	8.8	19.5	56	45	32	22	19
BB375	Level	30	14.4	21.5	83	66	47	33	28
3/4 MPT	Level	40	16.7	21.5	96	77	55	38	32
	Level	50	18.8	21.5	108	87	62	43	36
BB437	Up	30	18.5	29.5	78	62	44	31	26
3/4 MPT	Up	40	21.5	29.5	90	72	52	36	30
	Up	50	24.2	29.5	102	81	58	41	34
BB500	Level	30	29	20	179	142	102	72	60
1 MPT	Level	40	33	20	204	164	116	82	68
	Level	50	37	20	229	182	130	91	76
BB504	Up	30	29	41	90	72	51	36	30
1 MPT	Up	40	33	41	102	82	58	41	34
	Up	50	37	41	114	91	65	46	38

**BOOMINATOR  
BOOMLESS NOZZLES**



- Machined from Stainless Steel
- Superior fluid pattern and dist.
- Heavy droplet pattern for minimal drift
- Short, Regular, or Full Pattern
- All nozzles factory tested

Part#	Mpt	Pattern	List/E
BI1250 L or R	1/4	Regular	233.00
BI1400 L or R	1/4	Regular	255.00
BI1870 L or R	1/4	Regular	275.00
BI1253 L or R	1/4	Short	233.00
BI1255 L or R	1/4	Short	233.00
BI1404 L or R	1/4	Short	255.00
BI1406 L or R	1/4	Short	255.00
BI1876 L or R	1/4	Short	275.00
BI1871 L or R	1/4	Short	275.00
BI1250FS	1/4	Full	278.00
BI1400FS	1/4	Full	307.00
BI1400FM	1/4	Full	307.00
BI1870FS	1/4	Full	329.00
BI1870FM	1/4	Full	329.00
BI1870FL	1/4	Full	329.00
BI2650 L or R	1/2	Regular	329.00
BI3750 L or R	1/2	Regular	336.00

PART #	PSI	GPM	DIST.	4 MPH	5	7	10	12
BI1250	20	1.5	16	12	9	7		
LEFT &	30	1.7	16	13	11	8		
RIGHT	40	2.0	16	16	12	9		
BI1400	20	1.7	17	12	10	7	5	4
LEFT &	30	2.0	17	15	12	8	6	4.5
RIGHT	40	2.5	17	18	15	10	7	6
BI1870	20	3.0	18	21	17	12	8	7
LEFT &	30	3.5	18	24	19	14	10	8
RIGHT	40	4.3	18	30	24	17	12	10
BI1253	20	1.5	3	62	50	35	25	21
LEFT &	30	1.7	3	70	56	40	28	23
RIGHT	40	2.0	3	83	66	47	33	28
BI1255	20	1.5	5	37	30	21	15	12
LEFT &	30	1.7	5	42	34	24	17	14
RIGHT	40	2.0	5	50	40	28	20	17
BI1404	20	1.7	4	53	42	30	21	18
LEFT &	30	2.0	4	62	50	35	25	21
RIGHT	40	2.5	4	77	62	44	31	26
BI1406	20	1.7	6	35	28	20	14	12
LEFT &	30	2.0	6	41	33	24	17	14
RIGHT	40	2.5	6	52	41	30	21	17
BI1876	20	3.0	6	62	50	35	25	21
LEFT &	30	3.5	6	72	58	41	29	24
RIGHT	40	4.3	6	89	71	51	35	30
BI1871	20	3.0	10	37	30	21	15	13
LEFT &	30	3.5	10	43	35	25	17	15
RIGHT	40	4.3	10	53	43	30	21	18
BI1250FS	20	1.5	16	12	8	6.5		
	30	1.7	16	13	11	8		
	40	2.0	16	16	12	9		
BI1400FS	20	1.7	17	12	10	7	5	4
	30	2.0	17	15	12	8	6	4.5
	40	2.5	17	18	15	10	7	6
BI1400FM	20	1.7	22	10	8	5.5	4	3
	30	2.0	22	11	9	6	4.5	3.5
	40	2.5	22	14	11	8	5.5	4.5
BI1870FS	20	3.0	18	21	17	12	8	7
	30	3.5	18	24	19	14	10	8
	40	4.3	18	30	24	17	12	10
BI1870FM	20	3.0	23	16	13	9	6.5	5
	30	3.5	23	19	15	11	7.5	6
	40	4.3	23	23	19	13	9	7.5
BI1870FL	20	3.0	30	12	10	7	5	4
	30	3.5	30	14	12	8	5.5	4.5
	40	4.3	30	18	14	10	7	6

Other Nozzles Available - Please Call

BOOMLESS NOZZLES