

NOZZLE STRAINERS
POLYPRO BODY
ST. STEEL SCREENS

<i>Mesh</i>	<i>Part #</i>	<i>List/E</i>
50 (Blue)	MC55550	1.80
100 (Green)	MC555100	1.80
50/Check	MC55550C	3.77
100/Check	MC555100C	3.77



BOOM CLAMPS, STEEL

<i>Size</i>	<i>Part #</i>	<i>List/E</i>
1" SQ	B111C	4.07
1 1/4" SQ	B1114C	4.19
3/4" RD	B1134RC	3.70
1" RD	B111RC	4.07



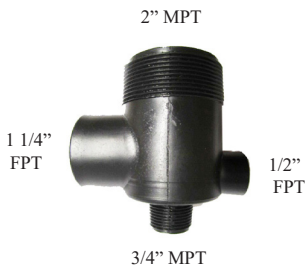
NO DRIP NOZZLE FITTINGS

<i>Hb/Type</i>	<i>Part #</i>	<i>List/E</i>
1/2" Elbow	DFNTL12	21.80
3/4" Elbow	DFNTL34	21.80
1/2" Tee	DFNTT12	21.80
3/4" Tee	DFNTT34	21.80



AGITATOR & TEE

<i>Description</i>	<i>Part #</i>	<i>List/E</i>
Agitator	T10VHPP	7.98
Agitator Tee	T34TEPP	9.84
Short Tee	T34TESPP	4.94
Extension	T34TEXPP	4.57



COMBINATION TANK ADAPT

<i>Nylon</i>	<i>List/E</i>	<i>Polypropylene</i>	<i>List/E</i>
Obsolete		T20CMPP	19.42



MANIFOLD

<i>Fpt</i>	<i>Fpt</i>	<i>Part #</i>	<i>List/E</i>
3/4" In	1/2" Out	M1284	70.70



<i>Hb</i>	<i>Nylon</i>	<i>List/E</i>	<i>Polypropylene</i>	<i>List/E</i>
1/4	T014EL	2.00	T014ELPP	1.71
3/8	T01EL	1.50	T01ELPP	1.60
1/2	T03EL	1.55	T03ELPP	1.65
5/8			T05ELPP	1.79
3/4	T04EL	1.82	T04ELPP	2.26
<i>Hb</i>	<i>Nylon</i>	<i>List/E</i>	<i>Polypropylene</i>	<i>List/E</i>
3/8	T01TE	1.80	T01TEPP	1.70
1/2	T03TE	1.87	T03TEPP	1.80
5/8	T05TE	3.37	T05TEPP	4.66
3/4	T04TE	2.56	T04TEPP	2.39
<i>Hb</i>	<i>Nylon</i>	<i>List/E</i>	<i>Polypropylene</i>	<i>List/E</i>
3/8	T01CR	2.16	T01CRPP	2.60
1/2	T03CR	2.75	T03CRPP	2.69
<i>Hb</i>	<i>Nylon</i>	<i>List/E</i>	<i>Polypropylene</i>	<i>List/E</i>
3/8	T01ST	1.15	T01STPP	1.15
1/2	T03ST	1.15	T03STPP	1.19
3/4	T04ST	2.24	T04STPP	2.24

NOTE: ALL NOZZLE FITTINGS INCLUDE LOCKNUT (T03NT)



<i>Part</i>	<i>Nylon</i>	<i>List/E</i>	<i>Polypropylene</i>	<i>List/E</i>	
Nozzle Sw Nut	T03CA	.48	T03CAPP	.52	
Winged Sw Nut	T03WG	1.17	T03WGPP	1.21	
<i>Hb</i>	<i>Nylon</i>	<i>List/E</i>	<i>Polypropylene</i>	<i>List/E</i>	
1/4	T3614	.62	T3614PP	.54	
3/8	T3638	.60	T3638PP	.52	
1/2	T3612	.68	T3612PP	.60	
<i>Part</i>	<i>Nylon</i>	<i>List/E</i>	<i>Polypropylene</i>	<i>List/E</i>	
Locknut	T03NT	.35	T03NTPP	.33	
Nozzle Cap	T03BL	.62	T03BLPP	.75	
Blank Disc			T03PLPP	DISC	
Washer	T03WA	DISC	T03WAPP	DISC	
<i>Thr</i>	<i>Fpt</i>	<i>Nylon</i>	<i>List/E</i>	<i>Polypropylene</i>	<i>List/E</i>
Fnbt	1/8	T02AD	1.48	T02ADPP	1.48
Fnbt	1/4	T03AD	1.48	T03ADPP	1.43
<i>Thr</i>	<i>Fpt</i>	<i>Nylon</i>	<i>List/E</i>	<i>Polypropylene</i>	<i>List/E</i>
Mnbt	1/8	NN2F	2.65	NN2FPP	2.55
Mnbt	1/4	NN4F	2.65	NN4FPP	2.55
<i>Thr</i>	<i>Mpt</i>	<i>Nylon</i>	<i>List/E</i>	<i>Polypropylene</i>	<i>List/E</i>
Mnbt	1/4	NN4	.73	NN4PP	.66
Mnbt	1/2	NN8	.90	NN8PP	.69

PUMPS

PUMP#	VOLTS	GPM/PSI	STYLE	VALVES	DIAPHRAGM	LIST/EA
8000543236	12V	1.8/60	SWITCH	VITON	SANTOPRENE	303.74
8007543836	12V	1.8/60	SW/FUSE	VITON	SANTOPRENE	342.64
8006543250	12V	1.8/45	BYPASS	VITON	SANTOPRENE	304.26
8006591250	12V	.18/45	BYPASS	VITON	SANTOPRENE	306.13
8005233236	115V	1.4/60	SWITCH	EPDM	SANTOPRENE	412.47
8000933250	115V	1.4/45	BYPASS	EPDM	SANTOPRENE	412.47
2088343135	12V	3.0/45	SWITCH	VITON	SANTOPRENE	390.00
2088514144	12V	4.0/45	SWITCH	SANTO	SANTOPRENE	546.89
2088514500	12V	4.0/45	BYPASS	SANTO	SANTOPRENE	507.62
2088594154	115V	3.3/45	SWITCH	SANTO	SANTOPRENE	440.09
50591311D011	12V	5.3/60	SWITCH	VITON	SANTOPRENE	578.09
50593611D011	12V	5.3/60	BYPASS	VITON	SANTOPRENE	578.09
DHP2	12V	7.0/45	SWITCH	VITON	SANTOPRENE	956.98

8000
SERIES



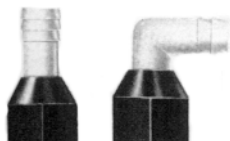
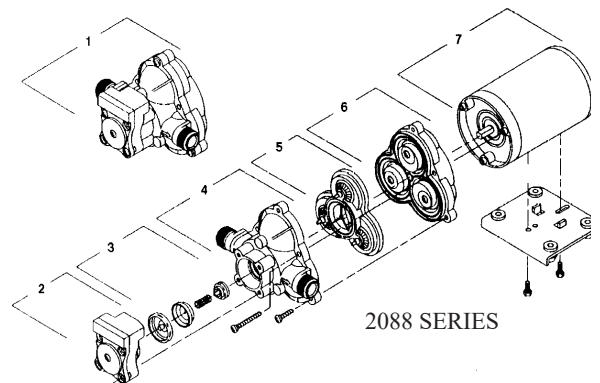
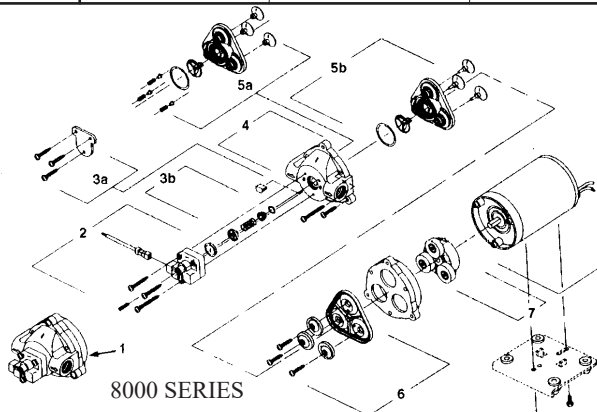
2088
SERIES



PUMPS / TUBING

REPLACEMENT PARTS

PUMP#	SWITCH KIT(2)		CHECK VALVE(3)		HOUSING(4)		VALVES-VITON(5)		VALVES-EPDM(5)		DIAPHRAGM(6)	
	PART#	LIST	PART#	LIST	PART#	LIST	PART#	LIST	PART#	LIST	PART#	LIST
8000543236	9437505	88.30	9437405	32.04	9437900	54.17	9439005	103.11	9439006	51.83	9439506	53.49
8007543236	9437505	88.30	9437405	32.04	9437900	54.17	9439005	103.11	9439006	51.83	9439506	53.49
8005233236	9437505	88.30	9437405	32.04	9437900	54.17	9439005	103.11	9439006	51.83	9439506	53.49
8006543250			9437405	32.04	9437900	54.17	9439109	130.89	9439106	63.11	9439506	53.49
8006591250			9437405	32.04	9437900	54.17	9439109	130.89	9439106	63.11	9439506	53.49
8000933250			9437405	32.04	9437900	54.17	9439109	130.89	9439106	63.11	9439506	53.49
2088343135	9423055	86.47	9423705	63.02	9423130	40.89	9423205	139.06			9423803	95.53
2088514144	9423055	86.47	9423705	63.02	9423130	40.89	9423205	139.06			9423803	95.53
2088594154	9423055	86.47	9423705	63.02	9423130	40.89	9423205	139.06			9423803	95.53
2088514500			9423705	63.02	9423130	40.89	9423205	139.06			9423803	95.53



SWIVEL-STRAIGHT

HB	Part #	List
3/8	807100	3.08
1/2	807000	2.88
5/8	815401	5.91
3/4	815601	3.53

SWIVEL-ELBOW

HB	Part #	List
3/8	806000	2.88
1/2	803400	2.88
5/8	815501	5.02
3/4	815701	3.53



**GAUGES
1/4" LM
BRASS
INTERNALS**

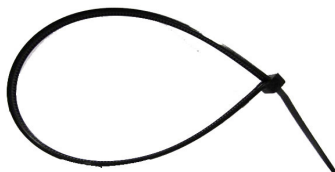
<i>Psi</i>	<i>Size</i>	<i>Dry #</i>	<i>List/E</i>	<i>Liq #</i>	<i>List/E</i>	<i>NH3#</i>	<i>List/E</i>
0-15	2 1/2	SG15	15.75	GG15	42.70		
0-30	2 1/2	SG30	15.75	GG30	42.70		
0-60	2 1/2	SG60	15.75	GG60	42.70	AG60	39.80
0-100	2 1/2	SG100	15.75	GG100	42.70		
0-160	2 1/2	SG160	15.75	GG160	42.70	AG160	39.80
0-200	2 1/2	SG200	15.75	GG200	42.70		
0-300	2 1/2	SG300	15.75	GG300	42.70		
0-400	2 1/2	SG400	15.75	GG400	42.70	AG400	39.80
0-600	2 1/2	SG600	15.75	GG600	42.70		
0-1000	2 1/2	SG1000	15.75	GG1000	42.70		
0-2000	2 1/2	SG2000	15.75	GG2000	42.70		
0-3000	2 1/2	SG3000	15.75	GG3000	42.70		
0-5000	2 1/2	SG5000	15.75	GG5000	42.70		
0-60	4	SG604	30.74	GG604	124.49		
0-100	4	SG1004	30.74	GG1004	124.49		
0-200	4	SG2004	30.74	GG2004	124.49		
Pigtail Protector		PGP	64.80				



BULKHEAD FITTINGS

<i>Fpt</i>	<i>Hole</i>	<i>Part#</i>	<i>List/E</i>	<i>Gasket</i>	<i>List/E</i>
1/2	1 3/8	BF8	20.24	BF8G	8.35
3/4	1 3/8	BF12	20.24	BF8G	8.35
1	1 3/4	BF16	26.35	BF16G	14.10
1 1/4	2	BF20	18.95	BF20G	14.55
1 1/2	3	BF24	39.57	BF24G	28.50
2	3	BF32	38.10	BF24G	28.50
3	4 1/2	BF48	94.21	BF48G	20.92

20% GLASS FILLED POLYPROPYLENE WITH SANTROPENE GASKET



**NYLON
TIE STRAPS
BLACK UV
RESISTANT**

<i>Length</i>	<i>Width</i>	<i>Part#</i>	<i>List/E</i>
3 3/4	.090	NS4BUV	.10
6	.135	NS6BUV	.11
8 1/4	.135	NS8BUV	.30
11 1/4	.190	NS12BUV	.53
14 1/4	.190	NS14BUV	1.07
17 1/2	.310	NS17BUV	1.49
21 1/2	.310	NS21BUV	1.71
28	.310	NS28BUV	2.05
36 1/2	.360	NS36BUV	2.53



EZT024

<i>Desc</i>	<i>Part#</i>	<i>List/E</i>
16 Gal	EZT016	553.05
24 Gal	EZT024	587.40

16 & 24 Gallon tank designed for ATV's
Wrap-around design allows for a low CG
Complete drainage from twin sumps
Easy mounting & dismounting of sprayer
because controls and booms are mounted to tank,
not ATV rack



**WORM DRIVE
CLAMPS**
(All St Steel)



**T-BOLT
CLAMPS**
(St. Steel
Band & Bolt)



**PLASTIC
CLAMPS**
-Black Nylon
-Double Teeth

Max"	Min"	Part#	List/E	Max"	Min"	Part#	List/E	Max"	Min"	Part#	List/E				
5/8	7/32	SSC4	2.12	1.87	1.62	TSSC20	15.58	.276	.220	SCA	.66				
11/16	7/16	SSC5	2.10	2.06	1.81	TSSC24	14.33	.323	.256	SCAA	.66				
7/8	5/16	SSC6	2.10	2.18	1.93	TSSC24A	15.29	.433	.358	SCBB	.73				
1	7/16	SSC8	2.95	2.50	2.18	TSSC32	14.33	.500	.413	SCC	.75				
				2.62	2.31	TSSC32A	14.92	.583	.480	SCD	.78				
				2.81	2.50	TSSC32B	14.33	.646	.524	SCE	.91				
				3.18	2.87	TSSC32C	14.33	.717	.594	SCF	.91				
				3.62	3.31	TSSC48	14.33	.795	.673	SCG	.87				
				3.75	3.43	TSSC48A	14.58	.870	.732	SCH	.88				
				4.56	4.25	TSSC64	21.75	.949	.803	SCJ	.94				
				4.76	4.38	TSSC64A	36.25	1.031	.886	SCK	1.23				
				4.94	4.56	TSSC64B	36.25	1.130	.976	SCL	1.15				
								1.220	1.055	SCM	1.11				
								1.437	1.283	SCP	1.89				
								1.551	1.382	SCQ	2.09				
NOTE: Above have 5/16" band				MEASURE OUTSIDE DIAMETER OF HOSE FOR PROPER CLAMP SIZE											
1	7/16	SSC8-HD	2.65												
1 1/4	9/16	SSC12	2.95												
1 1/2	11/16	SSC16	3.06												
1 3/4	3/4	SSC20	3.16												
2	1 1/16	SSC24	3.40												
2 1/4	1 5/16	SSC28	3.43												
2 1/2	1 9/16	SSC32	3.65												
2 3/4	1 13/16	SSC36	3.80												
3	2 1/6	SSC40	4.02												
3 1/2	2 9/16	SSC48	5.36												
4 1/2	2 1/2	SSC64	6.49												
NOTE: Above have 1/2" band															
5	3	SSC72	6.83												
5 1/2	3 1/2	SSC80	7.18												

CLAMPS / STRAPS

EVA TUBING				CLEAR VINYL TUBING (CVTB=Braided)				EPDM RUBBER HOSE			
Id	Ft/Roll	Part#	List/Ft	Id	Ft/Roll	Part#	List/Ft	Id	Ft/Roll	Part#	List/Ft
1/4	1000	EVA44	1.33	1/4	100	CVT44	1.10	1/4	500	SB44	1.36
3/8	500	EVA66	1.69	3/8	100	CVT66	1.34	3/8	500	SB66	1.61
1/2	300	EVA88	2.09	1/2	100	CVT88	1.67	1/2	500	SB88	2.14
5/8	200	EVA1010	2.66	5/8	100	CVT1010	2.01	3/4	500	SB1212	4.19
3/4	200	EVA1212	2.94	3/4	100	CVT1212	2.34				
1	125	EVA1616	4.39	1	100	CVT1616	3.01	3/8	500	TB66	3.24
NOTE: All have 1/8" wall thickness				1/4	300	CVTB44	1.09	1/2	500	TB88	4.57
3/8	300	EVAR6	1.50	3/8	300	CVTB66	1.36	5/8	500	TB1010	3.95
1/2	300	EVAR8	1.95	1/2	300	CVTB88	1.95	3/4	500	TB1212	5.81
3/4	200	EVAR12	2.83	5/8	300	CVTB1010	CALL	TB-Double Braid-300 PSI Rating			
1	200	EVAR16	6.08	3/4	300	CVTB1212	3.09				
Reinforced EVA				1	200	CVTB1616	4.64				

SEALANTS								
Teflon Tape	Part#	List/E	Liq Tef	Part#	List/E	Rectorseal	Part#	List/E
1/4 X 520	1452	2.10	2oz	LT2	13.77	8oz	RSTB	58.81
1/2 X 260	1226	1.86	4oz	LT4	26.14	2oz	RSTB-2	19.27
1/2 X 520	1252	2.44	8oz	LT8	45.55	8oz	RS-21	62.12
3/4 X 520	3452	3.74						



UNION BALL VALVES (BVMF)
 POLYPROPYLENE BODY
 EPDM O-RINGS TEFLON SEATS
 100 PSI @ 72°F FPT THREADS



BOLTED BALL VALVES (BBV)
 SEALS
 TEFLON SEATS 100 PSI @ 72°F
 FPT THREADS ST. STEEL BOLTS



BOLTED NOZZLE VALVES (BNV)
 POLYPROPYLENE BODY VITON



3-WAY VALVES
 POLYPROPYLENE BODY VITON SEALS
 TEFLON SEATS 100 PSI @ 72°F
 FPT THREADS ST. STEEL BOLTS
 BL=BOTTOM LOAD SL=SIDE LOAD



BRASS BALL VALVES



BRASS CONSTRUCTION VITON O-RINGS
 TEFLON SEATS 300 PSI 212°F

POLYPROPYLENE BALL VALVES

POLYPROPYLENE BUNA O-RINGS
 TEFLON SEATS 200 PSI

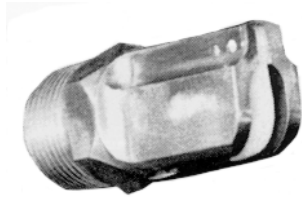


RWVF



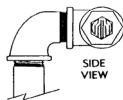
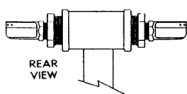
RWVB

<i>Fpt</i>	<i>Part#</i>	<i>List/E</i>	
1/2	BVMF88	39.25	
3/4	BVMF1212	39.25	
1	BVMF1616	49.13	
1 1/4	BVMF2020	84.25	
1 1/2	BVMF2424	83.67	
2	BVMF3232	106.25	
1/2	BBV88	80.63	
3/4	BBV1212	80.63	
1	BBV1616	80.63	
1 Full	BBV1616FP	88.88	
1 1/4	BBV2020	88.88	
1 1/4 Full	BBV2020FP	114.21	
1 1/2	BBV2424	114.21	
2	BBV3232	114.21	
2 Full	BBV3232FP	156.54	
3	BBV4848	252.04	
3 Full	BBV4848FP	374.14	
4	BBV6464	817.67	
1	BNV1616	116.79	
1 1/2	BNV2424	137.54	
2	BNV3232	137.54	
2 Full	BNV3232FP	200.25	
1	BBV1616BL	116.42	
1	BBV1616SL	116.42	
1 1/4	BBV2020BL	180.88	
1 1/4	BBV2020SL	180.88	
1 1/2	BBV2424BL	180.88	
1 1/2	BBV2424SL	180.88	
2	BBV3232BL	223.50	
2	BBV3232SL	223.50	
<i>Fpt</i>	<i>Part#</i>	<i>List/E</i>	
1/4	CBV44	19.82	
3/8	CBV66	18.92	
1/2	CBV88	27.74	
3/4	CBV1212	36.17	
1	CBV1616	61.53	
<i>Fpt</i>	<i>Part#</i>	<i>List/E</i>	
1/2	RWVF88PP	28.65	
3/4	RWVF1212PP	34.92	
1	RWVF1616PP	51.49	
<i>Mpt</i>	<i>Mght</i>	<i>Part#</i>	<i>List/E</i>
1/2	3/4	RWVB88PP	37.85
3/4	3/4	RWVB1212PP	41.65



**BOOMBUSTER
BOOMLESS NOZZLES**

- Machined from Stainless Steel
- Industrial Grade Nylon Diffusers
- Extra Wide Spray Pattern
- Spray chemicals and fertilizers.
- Standard pipe threads



ADD "R" TO END OF PART NUMBER FOR ROADSIDE NOZZLE.

Part# List/E

BB1203	262.10
BB1205	262.10
BB125	262.10
BB140	279.74
BB1806	292.95
BB18010	292.95
BB187	292.95
BB26011	323.79
BB265	323.79
BB375	341.40
BB437	356.83
BB500	427.31
BB504	427.31

PART #	ANGLE	PSI	GPM	DIST.	4 MPH	5	7	10	12
BB1203	Down	30	1.7	3	70	56	40	28	23
1/4 MPT	Down	40	2.0	3	83	66	47	33	27
	Down	50	2.2	3	91	73	52	36	30
BB1205	Down	30	1.7	5	42	34	24	17	14
1/4 MPT	Down	40	2.0	5	50	40	28	20	17
	Down	50	2.0	5	54	44	31	22	18
BB125	Level	20	1.5	14	13.3	10.6	7.6		
1/4 MPT	Level	30	1.7	15.5	13	11	7.8		
		40	2.0	15.5	16	13	9.1		
BB140	Level	30	2.0	16.5	15	12	8.5	6	5
3/8 MPT	Level	40	2.4	16.5	18	14	10	7	6
	Level	50	2.7	16.5	20	16	12	8	6.8
BB1806	Down	30	3.6	6	74	59	42	30	25
3/8 MPT	Down	40	4.3	6	89	71	51	35	30
	Down	50	4.8	6	100	79	57	40	33
BB18010	Down	30	3.6	10	45	36	25	18	15
3/8 MPT	Down	40	4.3	10	53	43	30	21	18
	Down	50	4.8	10	59	48	34	24	20
BB187	Level	30	3.6	18.5	24	19	14	9.6	8
3/8 MPT	Level	40	4.3	18.5	29	23	16	12	9.6
	Level	50	4.8	18.5	32	26	18	13	11
BB265	Level	30	6.8	19.5	43	35	25	17	14
1/2 MPT	Level	40	8.0	19.5	51	41	29	20	17
	Level	50	8.8	19.5	56	45	32	22	19
BB375	Level	30	14.4	21.5	83	66	47	33	28
3/4 MPT	Level	40	16.7	21.5	96	77	55	38	32
	Level	50	18.8	21.5	108	87	62	43	36
BB437	Up	30	18.5	29.5	78	62	44	31	26
3/4 MPT	Up	40	21.5	29.5	90	72	52	36	30
	Up	50	24.2	29.5	102	81	58	41	34
BB500	Level	30	29	20	179	142	102	72	60
1 MPT	Level	40	33	20	204	164	116	82	68
	Level	50	37	20	229	182	130	91	76
BB504	Up	30	29	41	90	72	51	36	30
1 MPT	Up	40	33	41	102	82	58	41	34
	Up	50	37	41	114	91	65	46	38

**BOOMINATOR
BOOMLESS NOZZLES**



- Machined from Stainless Steel
- Superior fluid pattern and dist.
- Heavy droplet pattern for minimal drift
- Short, Regular, or Full Pattern
- All nozzles factory tested

Part# Mpt Pattern List/E

BI1250 L or R	1/4	Regular	233.00
BI1400 L or R	1/4	Regular	255.00
BI1870 L or R	1/4	Regular	275.00
BI1253 L or R	1/4	Short	233.00
BI1255 L or R	1/4	Short	233.00
BI1404 L or R	1/4	Short	255.00
BI1406 L or R	1/4	Short	255.00
BI1876 L or R	1/4	Short	275.00
BI1871 L or R	1/4	Short	275.00
BI1250FS	1/4	Full	278.00
BI1400FS	1/4	Full	307.00
BI1400FM	1/4	Full	307.00
BI1870FS	1/4	Full	329.00
BI1870FM	1/4	Full	329.00
BI1870FL	1/4	Full	329.00
BI2650 L or R	1/2	Regular	329.00
BI3750 L or R	1/2	Regular	336.00

PART #	PSI	GPM	DIST.	4 MPH	5	7	10	12
BI1250	20	1.5	16	12	9	7		
LEFT & RIGHT	30	1.7	16	13	11	8		
	40	2.0	16	16	12	9		
BI1400	20	1.7	17	12	10	7	5	4
LEFT & RIGHT	30	2.0	17	15	12	8	6	4.5
	40	2.5	17	18	15	10	7	6
BI1870	20	3.0	18	21	17	12	8	7
LEFT & RIGHT	30	3.5	18	24	19	14	10	8
	40	4.3	18	30	24	17	12	10
BI1253	20	1.5	3	62	50	35	25	21
LEFT & RIGHT	30	1.7	3	70	56	40	28	23
	40	2.0	3	83	66	47	33	28
BI1255	20	1.5	5	37	30	21	15	12
LEFT & RIGHT	30	1.7	5	42	34	24	17	14
	40	2.0	5	50	40	28	20	17
BI1404	20	1.7	4	53	42	30	21	18
LEFT & RIGHT	30	2.0	4	62	50	35	25	21
	40	2.5	4	77	62	44	31	26
BI1406	20	1.7	6	35	28	20	14	12
LEFT & RIGHT	30	2.0	6	41	33	24	17	14
	40	2.5	6	52	41	30	21	17
BI1876	20	3.0	6	62	50	35	25	21
LEFT & RIGHT	30	3.5	6	72	58	41	29	24
	40	4.3	6	89	71	51	35	30
BI1871	20	3.0	10	37	30	21	15	13
LEFT & RIGHT	30	3.5	10	43	35	25	17	15
	40	4.3	10	53	43	30	21	18
BI1250FS	20	1.5	16	12	8	6.5		
	30	1.7	16	13	11	8		
	40	2.0	16	16	12	9		
BI1400FS	20	1.7	17	12	10	7	5	4
	30	2.0	17	15	12	8	6	4.5
	40	2.5	17	18	15	10	7	6
BI1400FM	20	1.7	22	10	8	5.5	4	3
	30	2.0	22	11	9	6	4.5	3.5
	40	2.5	22	14	11	8	5.5	4.5
BI1870FS	20	3.0	18	21	17	12	8	7
	30	3.5	18	24	19	14	10	8
	40	4.3	18	30	24	17	12	10
BI1870FM	20	3.0	23	16	13	9	6.5	5
	30	3.5	23	19	15	11	7.5	6
	40	4.3	23	23	19	13	9	7.5
BI1870FL	20	3.0	30	12	10	7	5	4
	30	3.5	30	14	12	8	5.5	4.5
	40	4.3	30	18	14	10	7	6